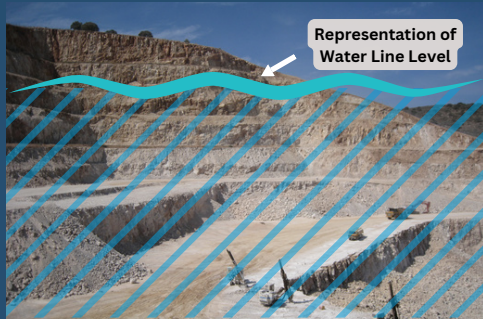


BLASTING

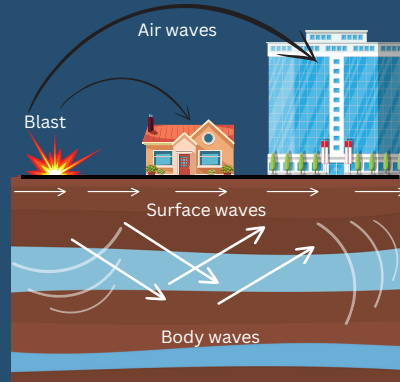
ADVISORY BOARD

SOURCE



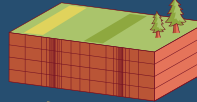
**BLASTING
LIMEROCK
QUARRY**

CONDUIT



SEISMIC WAVE ILLUSTRATIONS

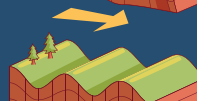
P Wave



S Wave



Rayleigh Wave

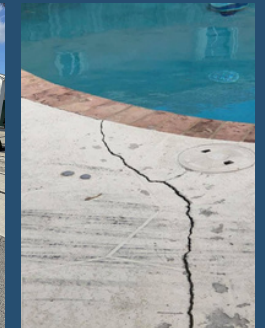


Love Wave



**AQUIFER WATER IS
THE CONDUIT FOR
BLAST ENERGY**

RECIPIENTS



THOSE AFFECTED BY BLASTING

SPECIAL-NEEDS POPULATION, RESIDENCES,
BUSINESSES, PUBLIC SAFETY & INFRASTRUCTURE.

THE IMPACT OF ROCK MINE BLASTING

SOURCE: THE ORIGIN OF THE PROBLEM

- Rock mine blasting involves the use of explosives to extract limestone from quarries.
- The process creates significant vibrations, noise, and airborne particulates that extend far beyond the immediate blast site.
- The blasting operations are concentrated in Miami-Dade County, often in close proximity to residential communities and public infrastructure.

CONDUIT/ENERGY: HOW THE PROBLEM SPREADS

- Ground Vibrations: Blasting generates seismic waves that travel through the earth, causing cracks in homes, roads, and infrastructure.
- Limestone exists within the Biscayne Aquifer. The water in the Aquifer carries the energy wave great distances with little decay.
- Airborne Disturbances: Explosions release dust and debris, impacting air quality and posing health risks for residents.

RECIPIENTS: THOSE AFFECTED BY BLASTING

- Disruption to Special-Needs Populations: The loud, repetitive blasts can severely affect individuals with sensory sensitivities, such as those on the autism spectrum or those with anxiety disorders, leading to increased stress, panic attacks, and a diminished quality of life.
- Deterioration of Mental Health: The unpredictable nature of the blasting exacerbates anxiety and stress disorders, creating a chronic sense of unease and a lack of control over one's environment for affected residents.
- Devaluation of Real Estate: The persistent seismic activity damages homes and infrastructure, leading to costly repairs, decreased property values, and making properties less desirable in affected areas.
- Compromised Property Safety: Vibrations from blasting weaken components, causing cracks throughout the structure, reducing the safety of buildings and increasing the risk of significant failures over time.
- Damage to Roads and Infrastructure: The repeated ground tremors contribute to road degradation, creating sinkholes and cracks that jeopardize the safety of drivers and increase municipal repair costs.

While rock mining operations are currently confined to the Lakebelt region of Miami-Dade County, the impact of mine rock blasting extends far beyond this area. Residents across western Miami-Dade County and southwest Broward County are experiencing frequent, earthquake-like tremors caused by the blasting. This seismic activity is causing significant damage, ranging from cosmetic cracks to structural issues, impacting homes, businesses, and critical infrastructure.

We urge you to stand with us to demand solutions in Tallahassee. By working together as municipalities and residents, we can send a unified message for responsible and reasonable reform.



Complaint Form



MiamiDade Pilot Program